

Urban Hazards Forum

John Jay College of Criminal Justice
January 22, 2002



Long-Term Disaster Recovery
Brad Gair
FEMA Federal Coordinating Officer

Principles of Long-Term Recovery

- 1. Start Early - All Recovery is Long-Term**
- 2. Successful Process Must be Locally Driven**
- 3. Recovery Planning is Essential**
- 4. Need Significant Interagency Cooperation**
- 5. Tailor Federal Assistance to Each Disaster**

All Recovery is Long-Term

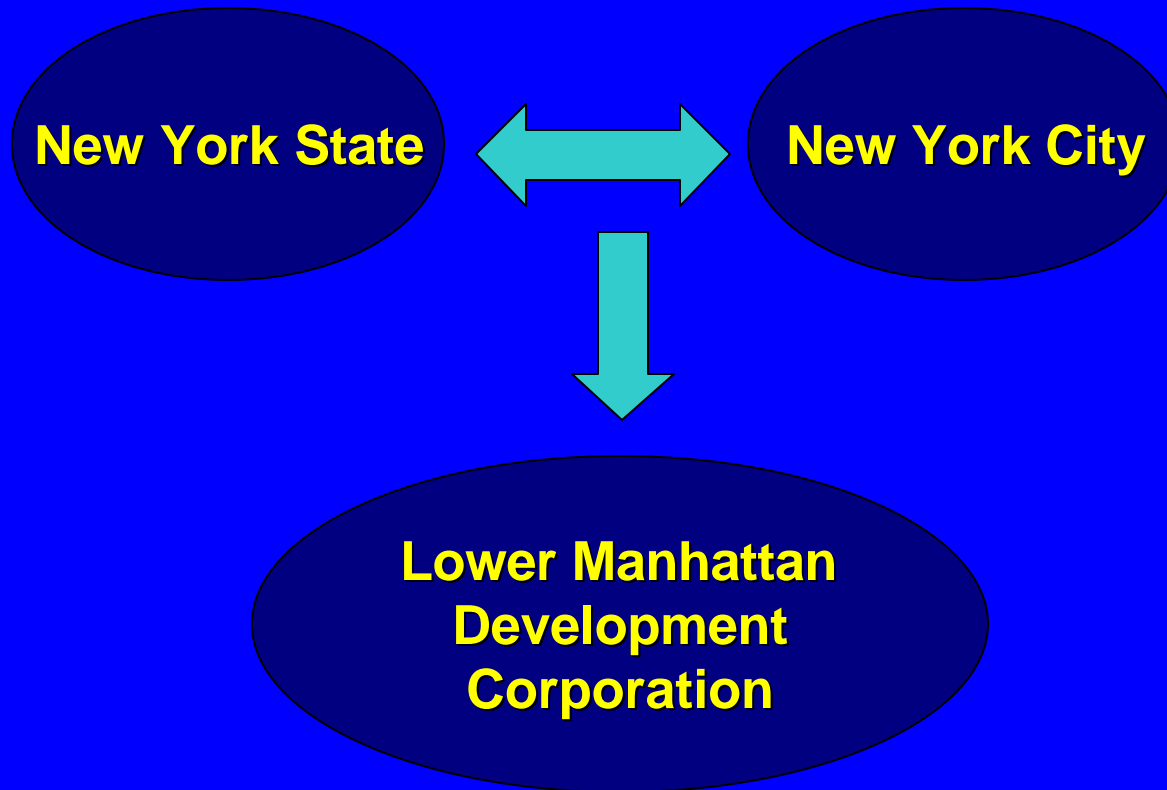


- **Emergency Response Measures**
- **Basic Human Needs**
- **Infrastructure Quick Fixes**



- **Unmet Human Needs**
- **Infrastructure Reconstruction and Modernization**
- **Economic Revitalization**

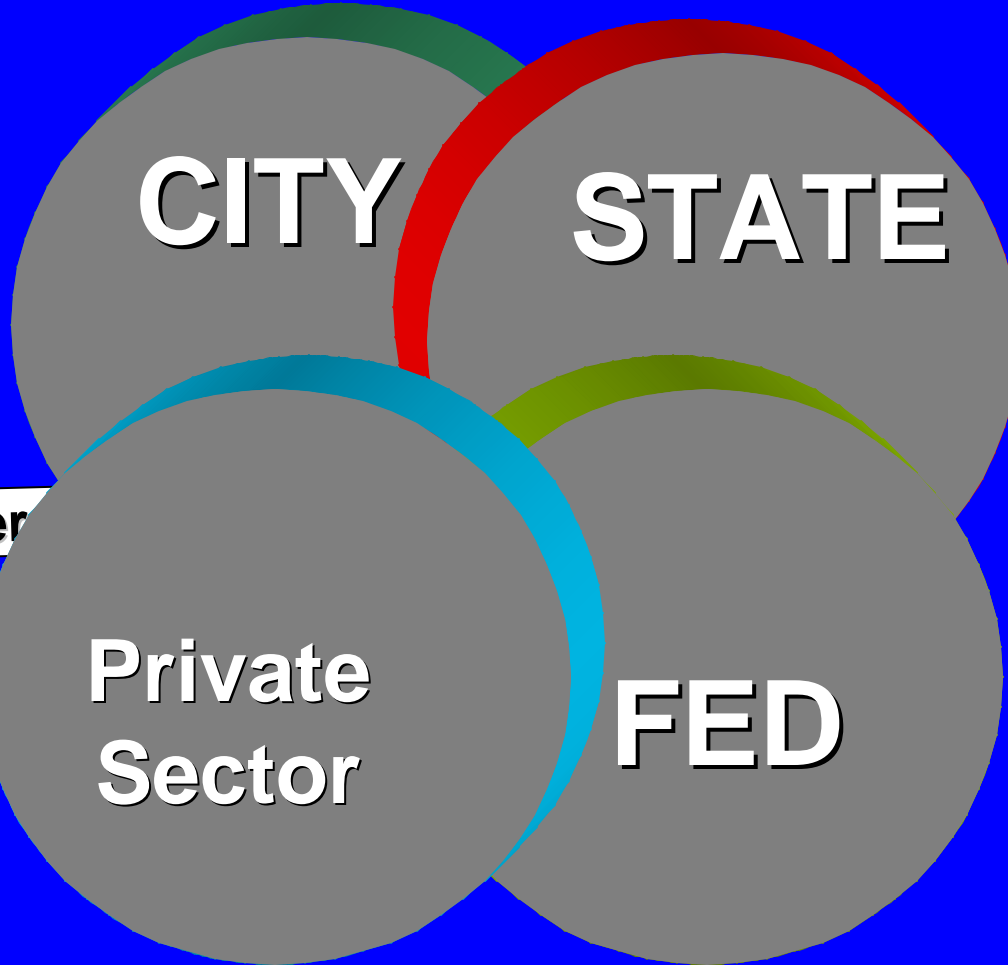
A Successful Process Must be Locally Driven



Develop A Recovery Plan

- **Inventory Damages, Needs and Available Resources**
- **Agree Upon the Recovery Philosophy**
- **Identify Gaps, Unmet Needs and Desired Enhancements**
- **Design a Flexible Recovery Program for a Changing Environment**
- **Prepare an Implementation Strategy**

Need Significant Interagency Cooperation



Long-Term

WHITE HOUSE ECONOMIC REVITALIZATION TASK FORCE



Provide prioritized list of projects, cost estimates and available funding/shortfalls

Provide policy guidance, facilitate interagency coordination and administer special programs



FEDERAL TASK FORCE TO SUPPORT NYC



Provide information on significant unmet needs, funding requests and timetables

Develop a consolidated funding package, facilitate issue resolution and streamline delivery



INFRASTRUCTURE RECOVERY WORKGROUP

INFRASTRUCTURE RECOVERY WORKGROUP

NYC Dept. of Design and Construction
NYC Dept. of Environmental Protection
NYC Dept. of Transportation
NYC Office of Emergency Management
NYC Office of Management and Budget
NYC Economic Development Corporation
Metropolitan Transportation Authority/
NYC Transit
NYS Emergency Management Office
NYS Dept. of Transportation
NYS Division of the Budget
NYS Dept. of Environmental Protection
Empire State Development Corporation

NY Metropolitan Transportation Council
Port Authority of NY/NJ
New Jersey Transit
New Jersey Dept. of Transportation
North Jersey Trans. Planning Authority
Federal Emergency Management Agency
U.S. Dept. of Housing & Urban Development
U.S. DOT Federal Highway Administration
U.S. DOT Federal Transit Administration
ConEdison
Empire City Subway
Verizon
AT&T

Tailor Federal Aid to the Disaster

- **Use Existing Programs to the Maximum Extent Possible**
- **Seek Special Appropriations and/or Legislation Only When Needed**
- **Avoid Duplicating Other Programs and Benefits**
- **Identify Opportunities for Streamlining Delivery of Federal Assistance**

Federal Task Force to Support NYC

Federal Emergency Management Agency

U.S. Army Corps of Engineers

U.S. Department of Commerce/EDA

U.S. Department of Health & Human Services

U.S. Department of Housing and Urban Development

U.S. Department of Justice

U.S. Department of Labor

U.S. Environmental Protection Agency

U.S. Small Business Administration

U.S. DOT Federal Highway Administration

U.S. DOT Federal Transit Administration

Special Urban Issues

- **More Political Jurisdictions Involved**
- **More Complex Infrastructure**
- **More Diverse Economy**
- **More Local Capabilities/Resources**
- **More Sophisticated/Demanding Clientele**
- **More Time Sensitive Process**

